

Dust Boot Install

Overview

Unlike most fixed dust removal systems, this system is just the opposite, the boot rises the deeper you go into your cut. Friction keeps the boot from falling back down, from a simple rubber band. This approach keeps pressure off the Z assembly and avoids potentially catastrophic results.

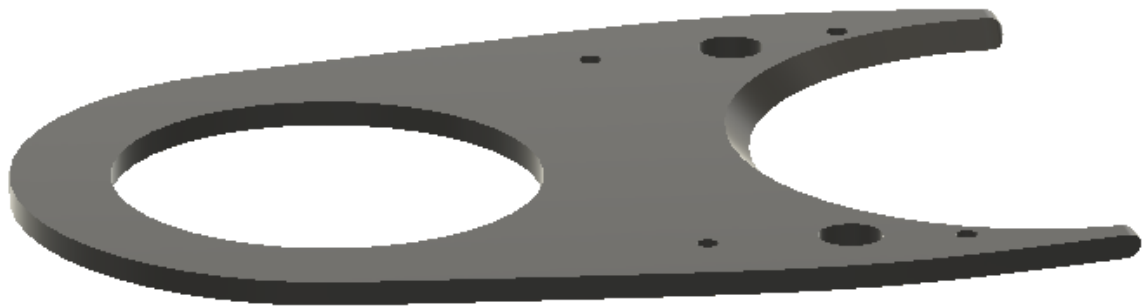
The only parts that are fixed are the **top mount** and the **bottom router mount**.

The Exhaust **pipe**/tube is fixed to some extent in that it needs a permanent height which is set by 3 screws holding it on top of the top mount. But once that is set you can remove the tube while it's still connected to your exhaust hose to clean up afterwards.

1. INSTALL THE TOP MOUNT

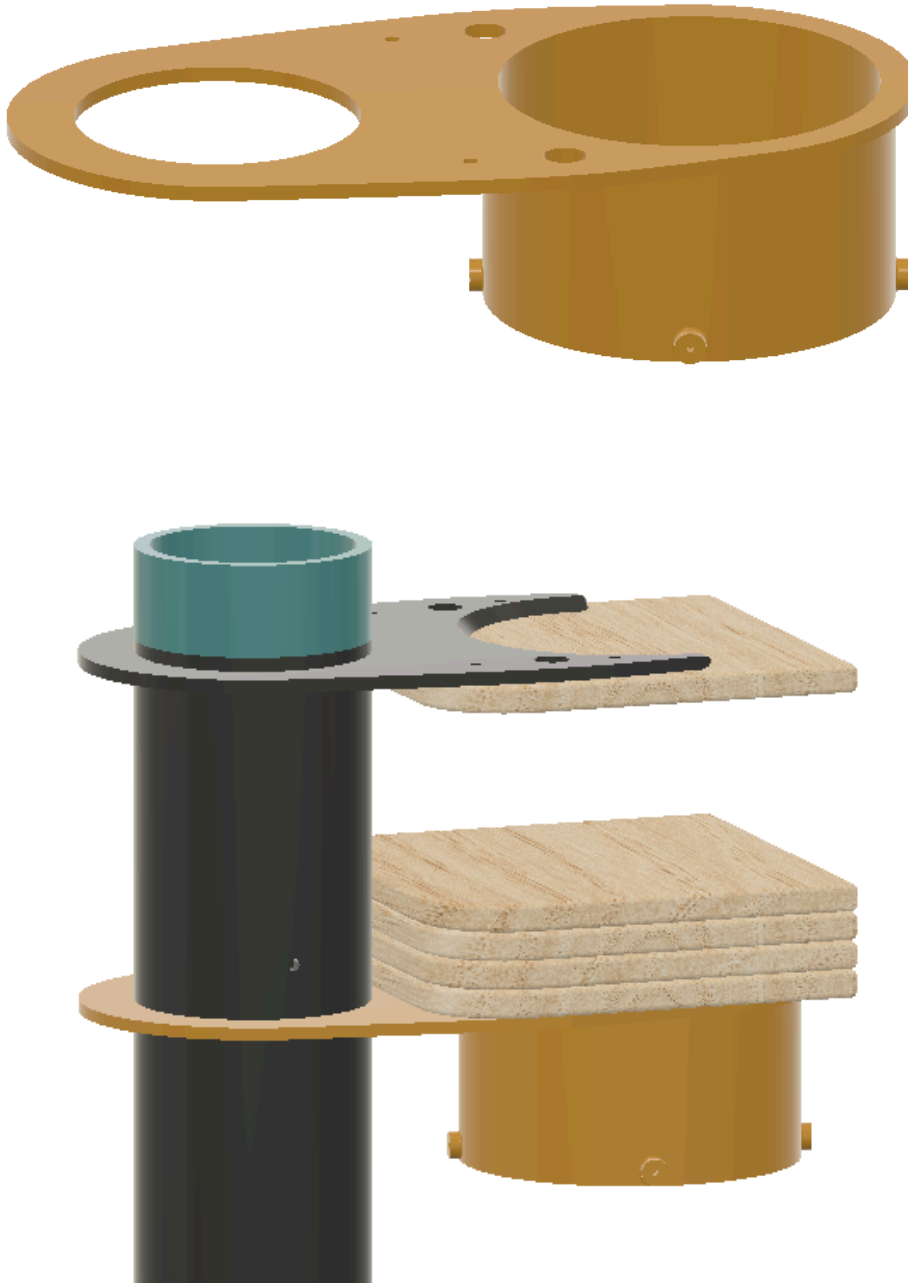
Screw the top mount using the screws provided. Make sure it is center aligned. The beveled edge goes up. (pilot holes are recommended)

TOP MOUNT



2. INSTALL THE BOTTOM ROUTER MOUNT

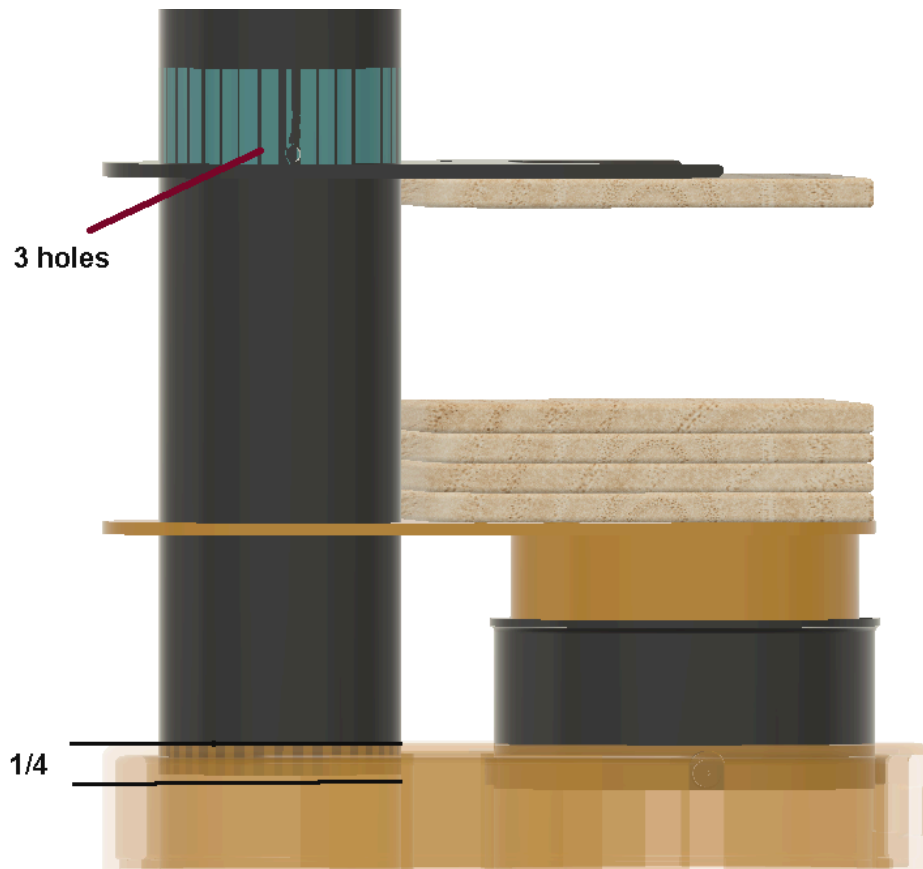
Wrap some tape around the top of the pipe. This will keep the tape from falling while you align the components. Insert the tube from the top. Slide the Router Mount in place. Leave the pipe in while securing all screws OR mark the holes for the screws. (pilot holes are recommended). This will keep everything aligned. Screw the bottom in place.



3 . POSITION PERMANENT PIPE HEIGHT WITH 3 SCREWS

Install the middle slide and the boot.* To install them, pull them gently open, wide enough to go over the 4 tabs. Now push the boot and middle slide down to full extension.

Take the tape off the top of the pipe. Insert the pipe down to the boot and into the boot no more than a 1/4 inch. Wrap the tape around the pipe at the top mount position so it won't move. Now you can mark where the holes for the 3 screws go, equal distance around.



***NOTES:**

- Be aware of hold downs when planning your toolpaths. (Safe Z)
- You can put a board of the same or less height in front (end of X) of your material to catch chips.
- With Evo you can turn the middle slide to one side to lock it in place when changing bits. With Quantum, this is not an option as the quantum has less height on the top router mount.
- Make sure the router is fully seated.